



State of the College Fall 2016

Costas Tsatsoulis

Dean

UNT[®]

UNIVERSITY
OF NORTH TEXAS[®]

EST. 1890

Our College of Engineering



Fall 2016

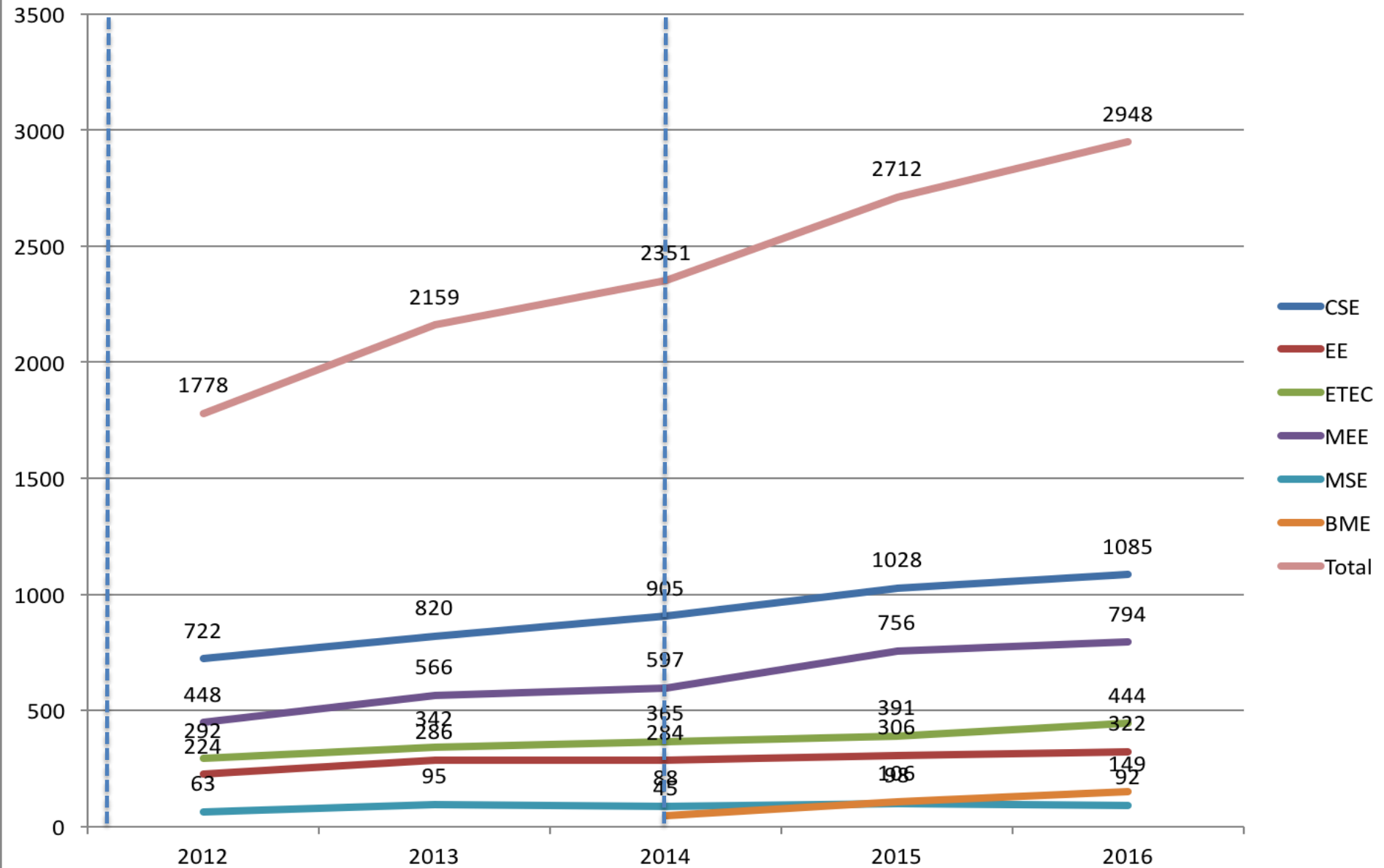
- 96.25 (100) Faculty
- 3,609/3,616 students

EST. 1890

UNT

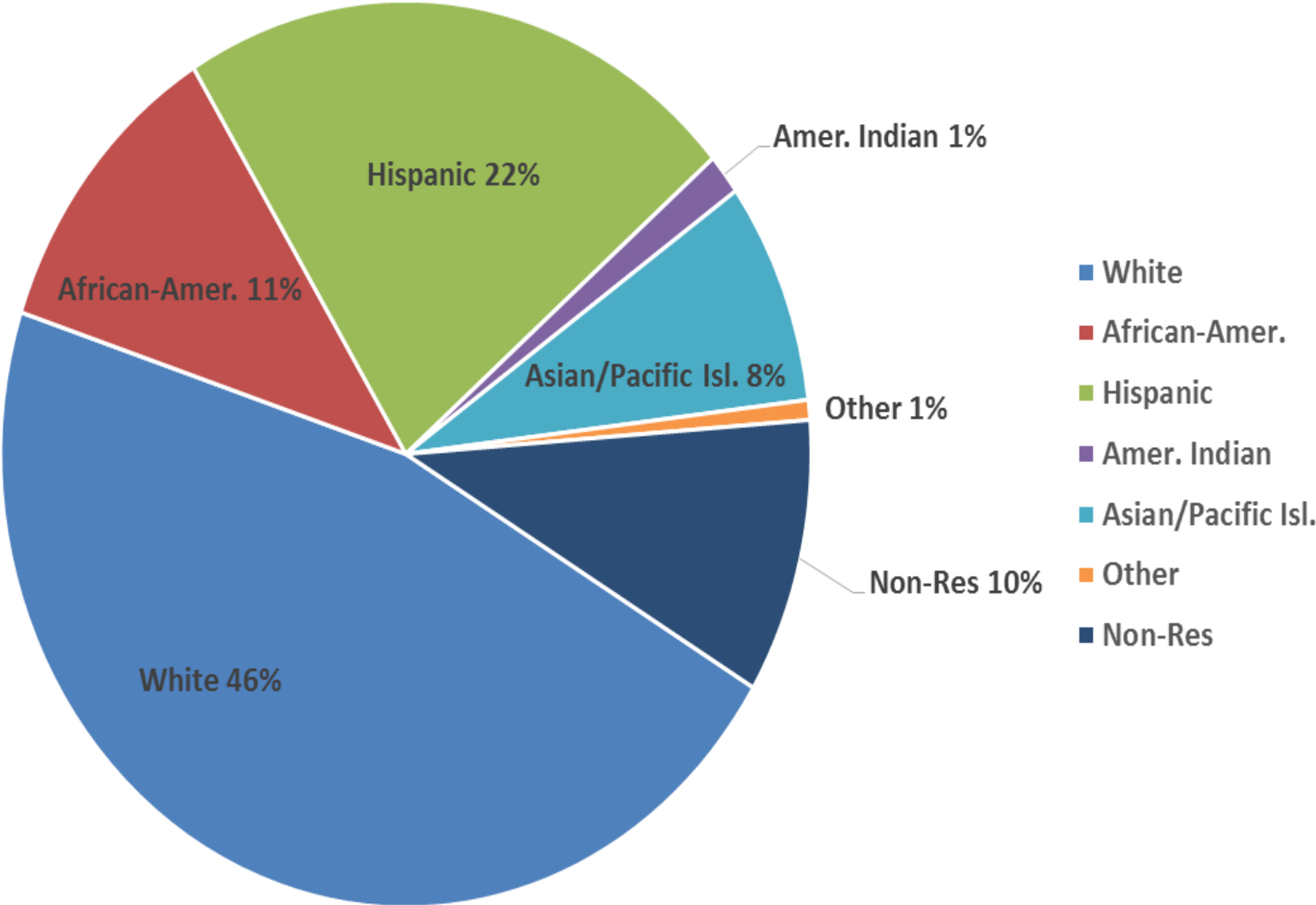
Undergraduate Program

Engineering Undergraduate Enrollments

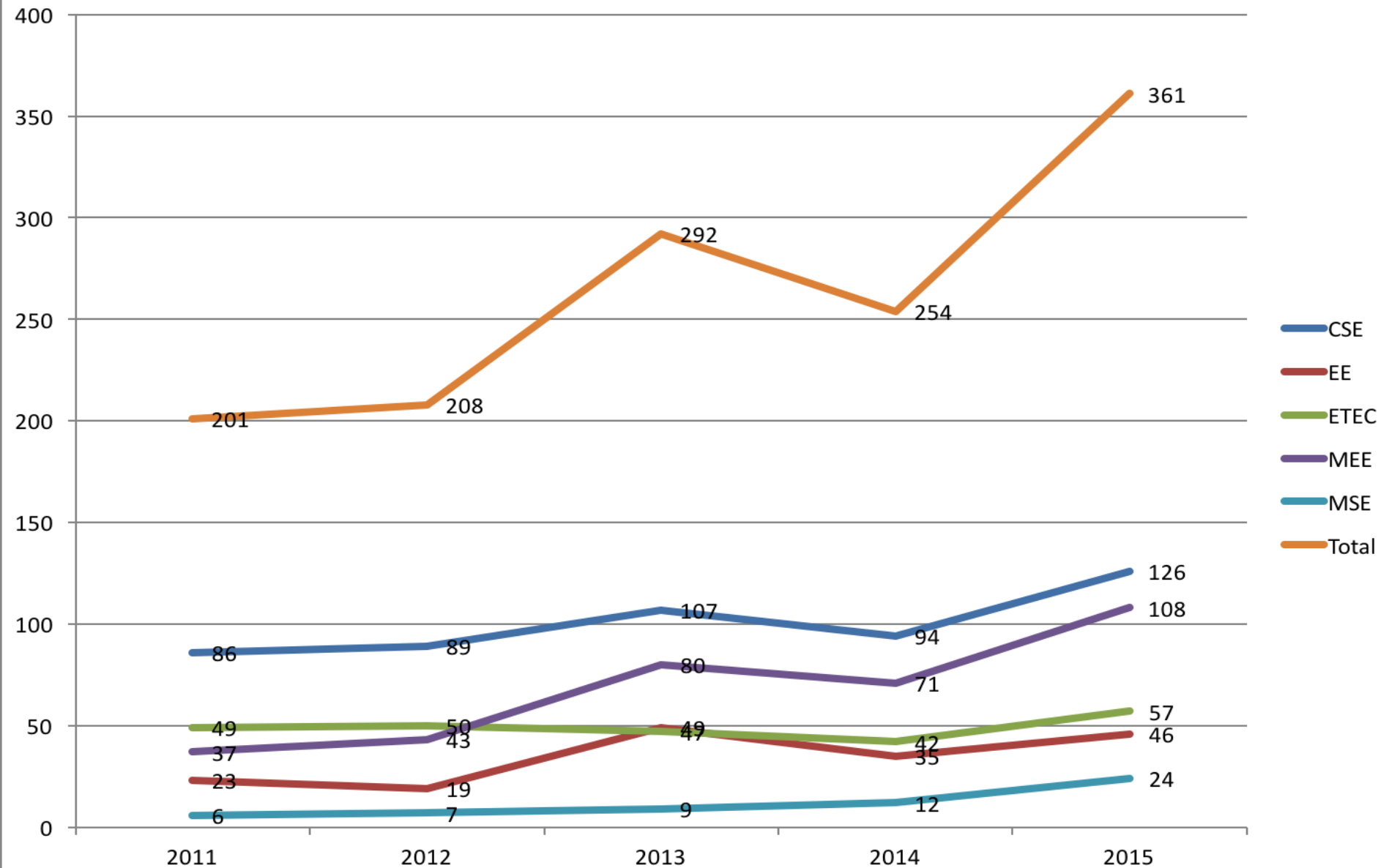


Undergraduate Student Ethnicity

Updated



Undergraduate Degrees



Other

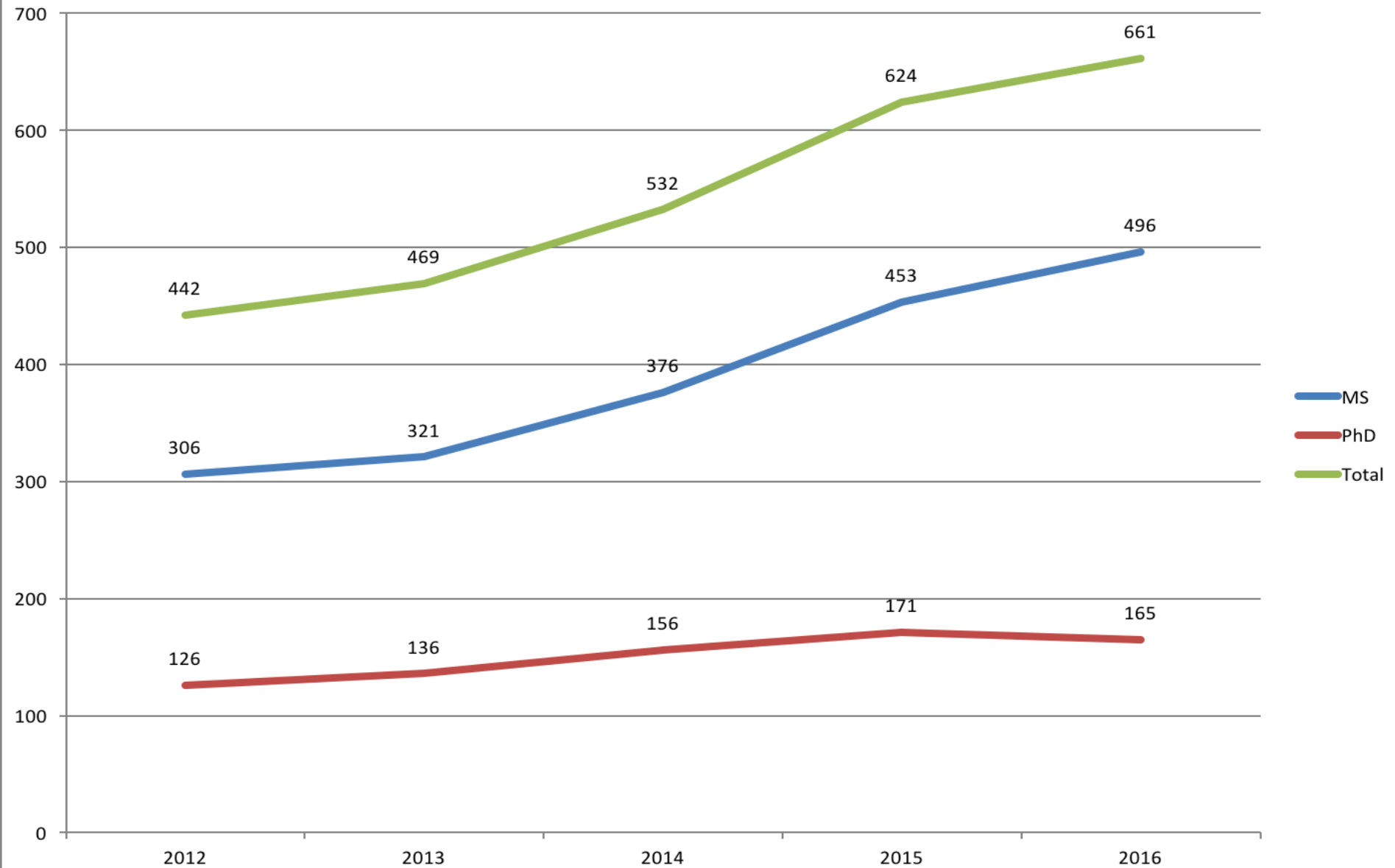
- ABET accreditation for MEET, ELET, CS and IT
 - Next visit in Fall 2019
- Engineering Community in Crumley Hall continuing strong in its 4th year
- We continue to use the Engineering Fee (EF) very successfully for peer tutors, TAs, equipment purchases, staff salaries, and professional development of our students
- SUPER brought to UNT 17 undergraduates from Thailand, India, and Mexico
- First semester implementation of our program-based foundation courses
- Engineer's Aerie taking flight very successfully
- Adding two advisors to support BME and growing student body
- We hired a new recruiter

New Initiatives

- Studying a change in admission rules for transfer students
 - Reacting to the way Admissions calculates transfer GPA and concerns about performance in the classroom
 - Aligning ourselves with our Texas peers
 - Focusing on performance in SMEC courses
- Studying a change in internal program transfer rules
 - Will affect PREP students – Already talking with PACS
- Initiating preparation/review courses for the FE exam
 - Last year only 53% passing rate
- Working with Risk Management on better safety rules/processes/training
 - Limited access to labs
 - Equipment locks
- Created committee to study the creation of common labs for some courses across departments
- Refocus Engineering Community in Crumley Hall to Engineering

Graduate Program

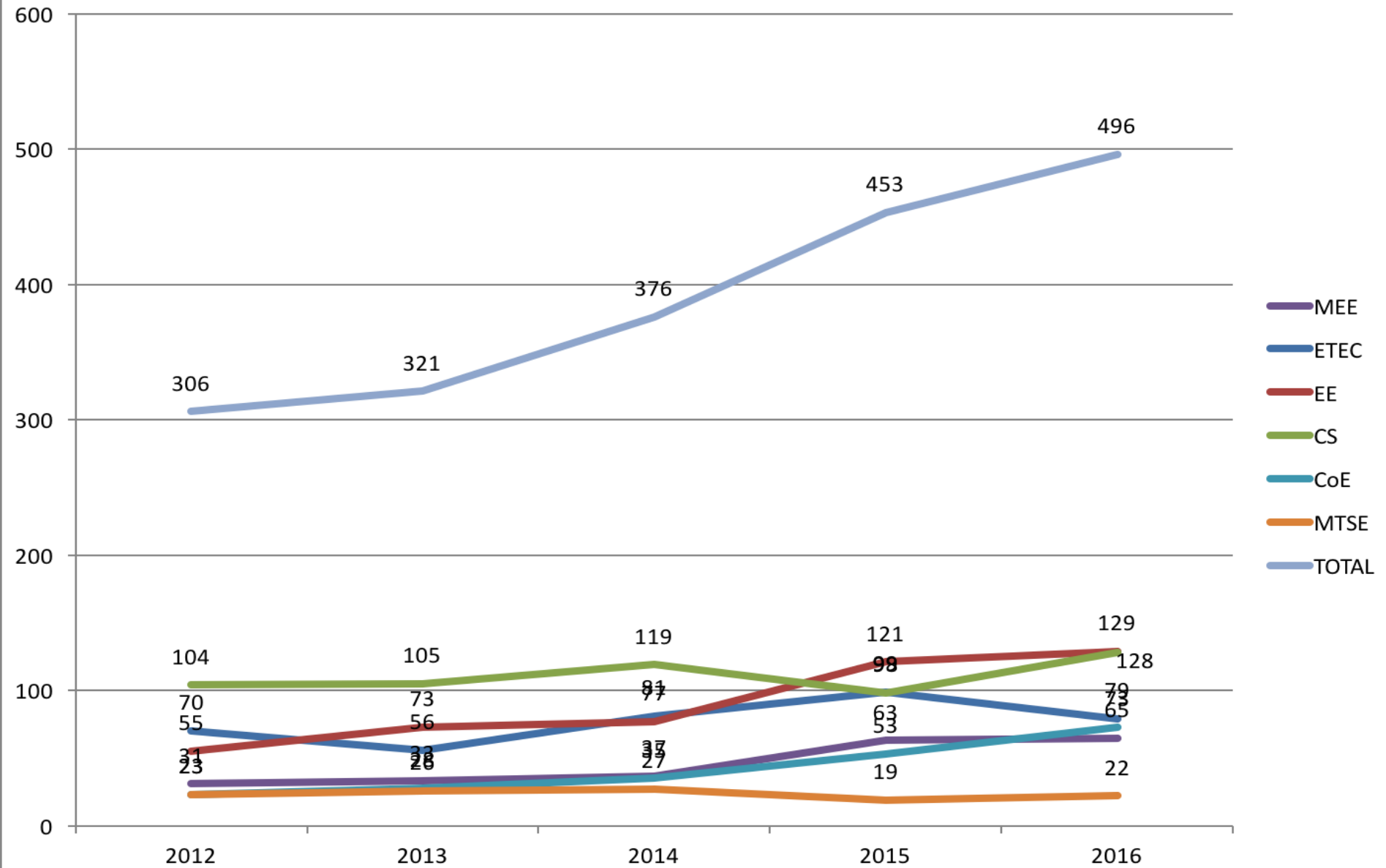
Graduate Enrollments



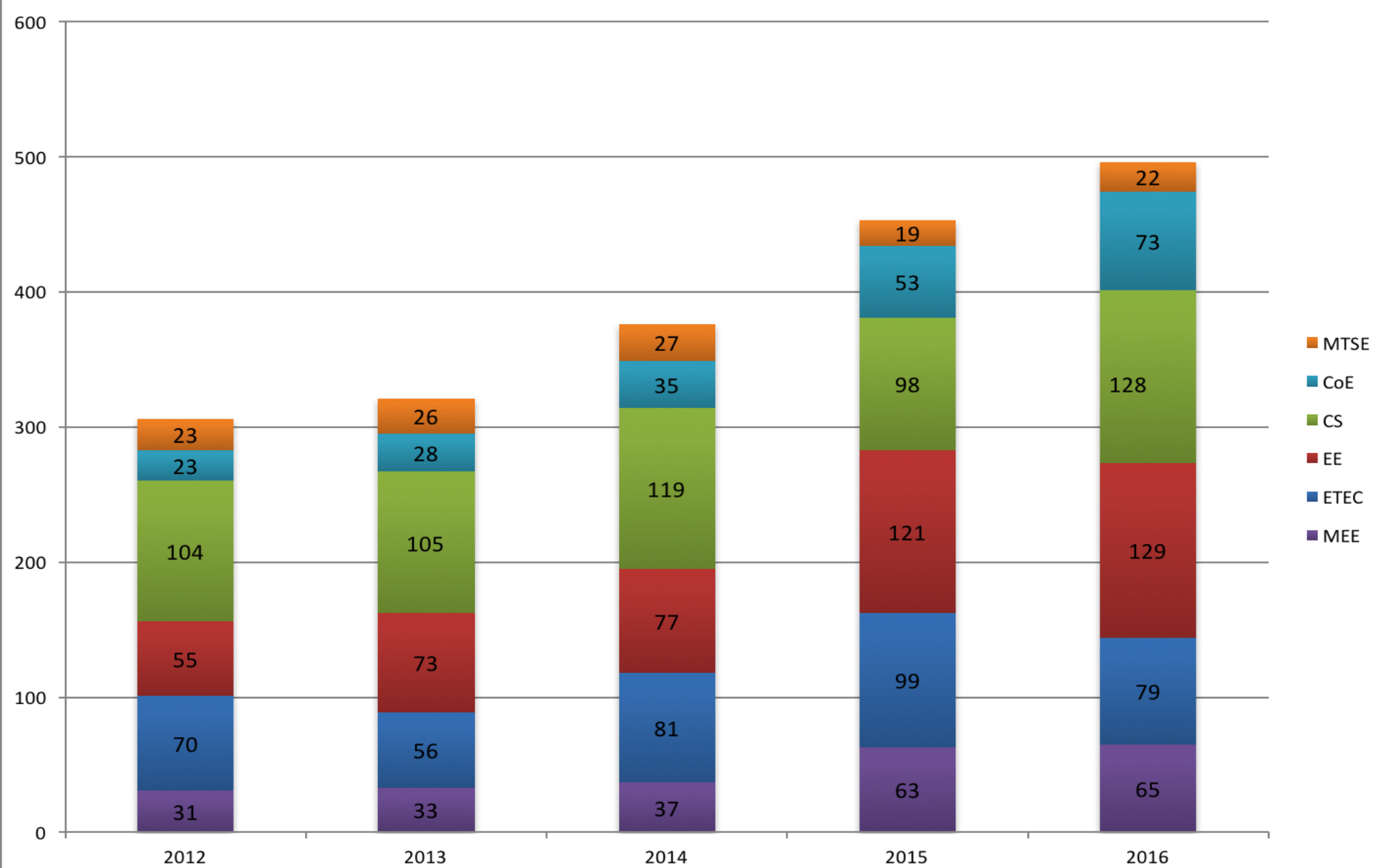
EST. 1890

UNT

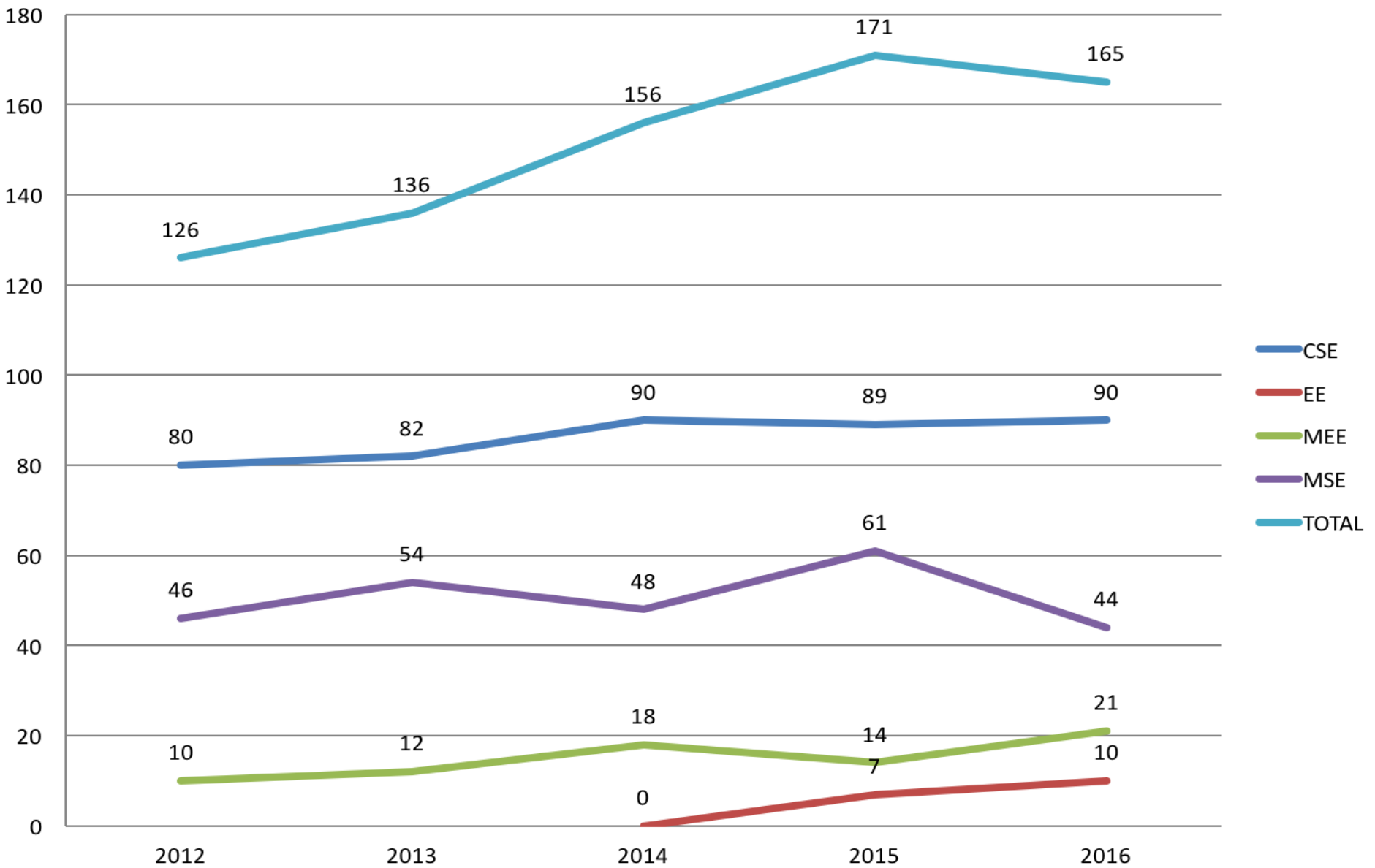
MS Enrollments



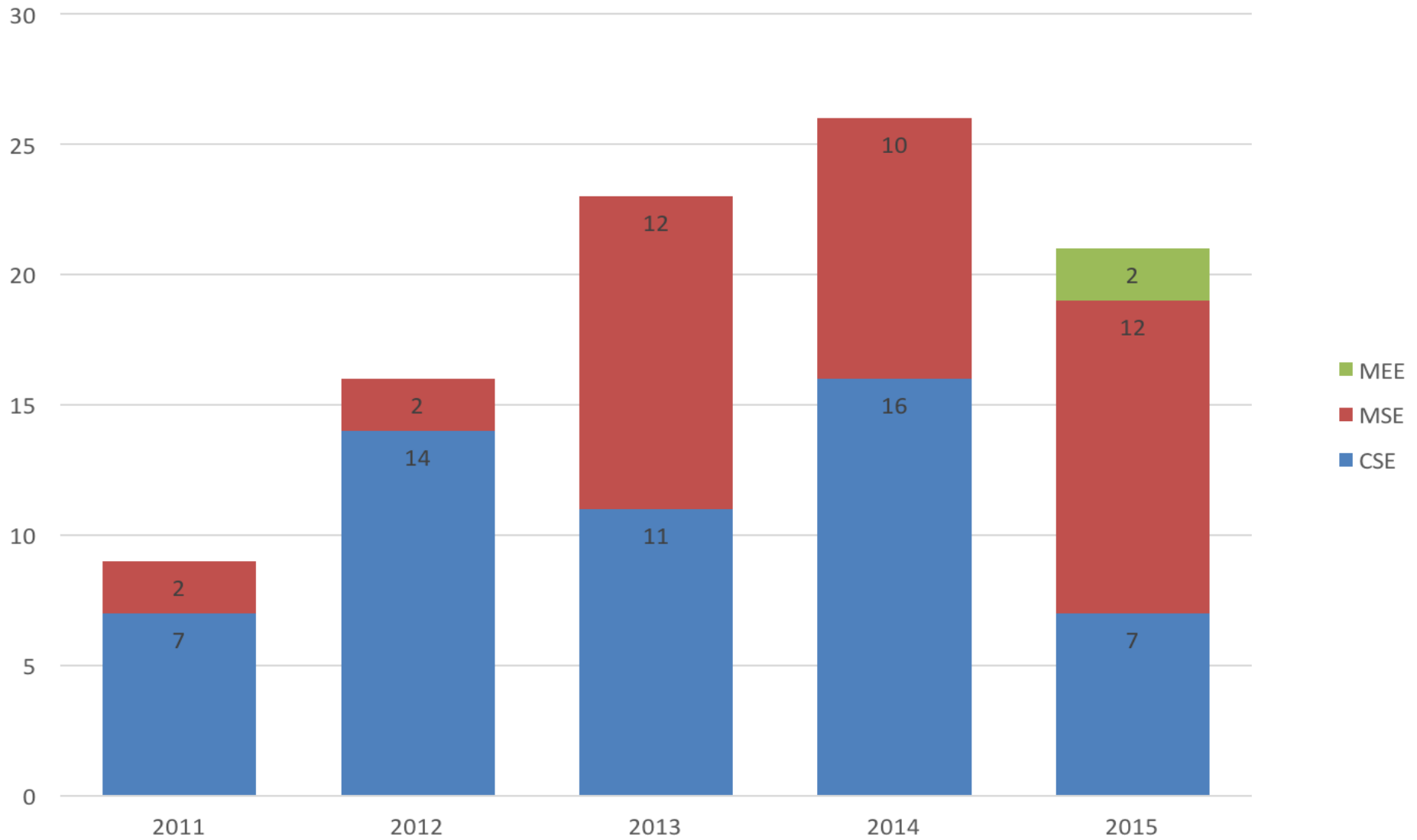
MS Enrollments



Doctoral Enrollments



Doctoral Graduates



Other

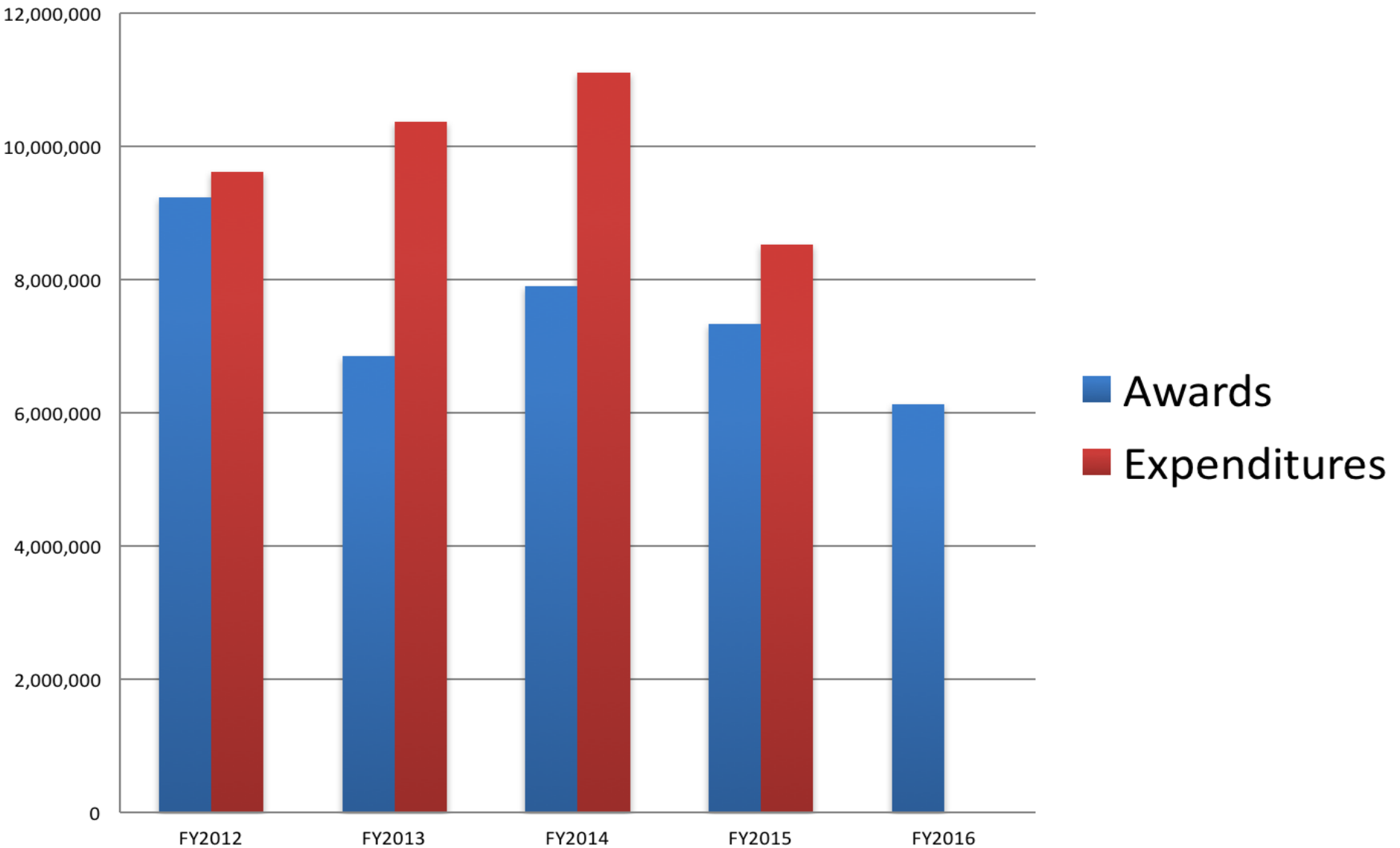
- Proposal for a BME track under MTSE approved by the CENG Grad Council
- Proposal for a BME track under MEE approved by the CENG Grad Council
- Planning graduate student visit day on November 10
- The EF allows us to continue to offer support for conference travel and writing tutors

Issues with the Graduate Program

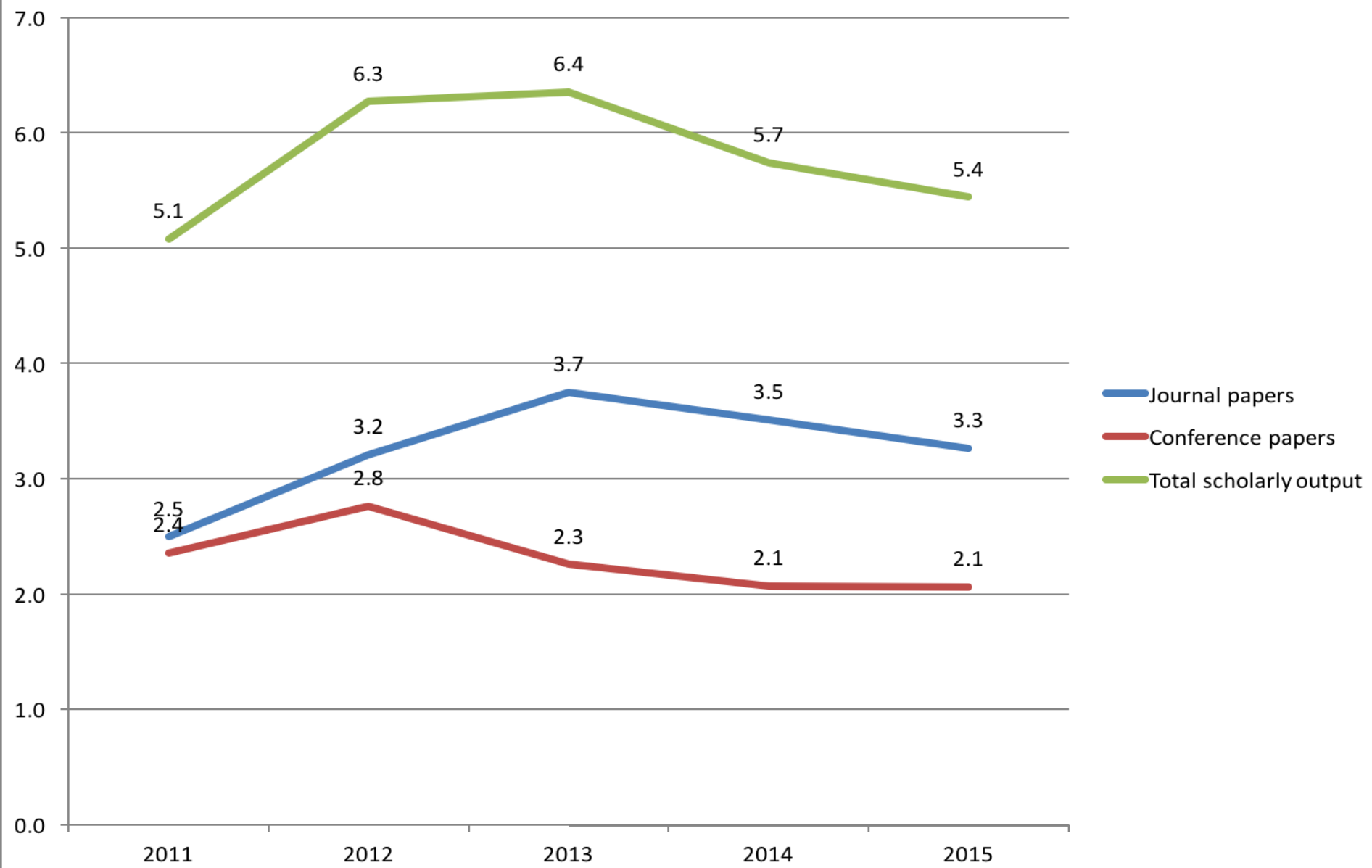
- Extreme pressure to some programs because of explosive growth of MS program
 - Due to agents
 - In F15 and S16 CENG received 158 MS students from agents and 134 through the regular application process
 - Since 2014: MSCoE up 109%; MSEE up 68%; MSMEE up 76%
 - Our predictive yield models fail: students recruited by agents will always come
 - Quality of students brought by some agents questionable
 - E.g. 14.5% of MS students recruited by a specific agency in F15 had a gpa below 3.00, compared to 7% of the students who came through the regular application process
- Need a more rigorous annual review of Ph.D. students that has consequences

Research and Scholarship

Funded Research Performance



Scholarly Output



Progress

- Organized research culture workshop in January
- Organized research discovery workshop in August
- Developing guidelines for support of pre- and post-proposal submission
 - 1/3 of CENG IDC will be spent on this
- Putting together a “Red Team”
- Hiring a Design student to help our proposals
- Starting visits by program directors
 - Interest area talk + general directorate talk
- Due to Tom and Angus we have had more and more serious visits by industry than ever before
 - Office of VPR is sometimes an obstacle re. IP
- Aggressively organize visits to funding agencies
- We still cover all trips to meet with collaborators or visit PMs
- We still have a consultant to look at and evaluate your proposals

Others

- All departmental P&T policies completed
- Continuing examination of departmental bylaws
- Faculty mentoring
 - Untenured faculty lunches
 - Mentor workshop
- CSE phase I renovations completed; phase II to start in January
- BME and MTSE lab renovations proceeding – slowly
- Advising Office renovations to start and end in October
- First meeting of BME extension committee on 10/5
 - New classrooms
- Homecoming – Be there!!
- May commencement at Discovery Park!

UNT Frisco

- What we've done so far
 - Offered a short course to industry
 - RoboCamp
- What we are planning to do
 - Spring 2016
 - Game Programming certificate
 - Titanium alloys and nondestructive testing short course targeting the aerospace industry
 - Fall 2016: Executive MS in Computer Science
 - Cybersecurity
 - Game Programming
 - Big Data/Analytics
 - What are you going to propose??

Questions?