



Hui Zhao

Department of Computer Science and Engineering

Associate Professor

Director of Lab of Accelerated Computer Architecture (LARC)

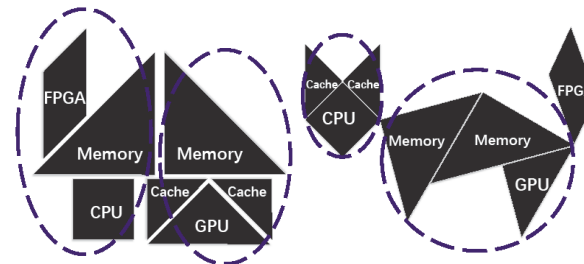
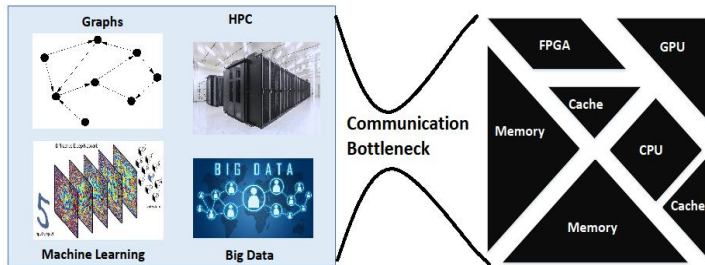
Research Interest: Computer architecture, Heterogeneous Computing, Accelerated Computing, Embedded Machine Learning

Research Group: 3 Ph.D. students

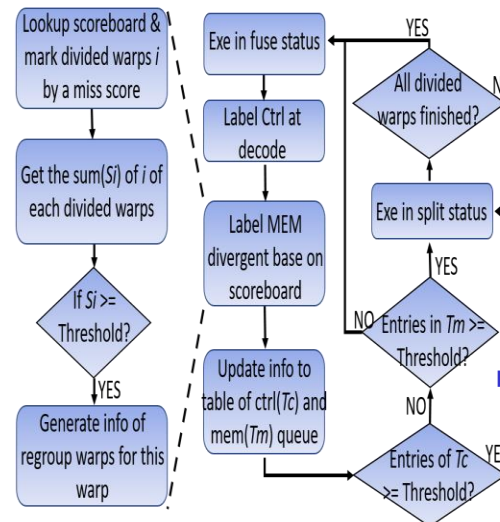
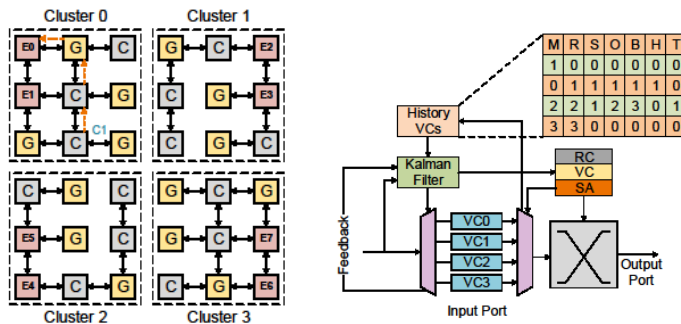


Heterogeneous Computing using Chiplets

- Design virtual super chips with reconfigurable aggregated chiplets
- Hybrid wireless NoC
- Seamless resource sharing among chiplets



Reconfigurable Heterogeneous Chiplets Connected with Hybrid wireless NoC.

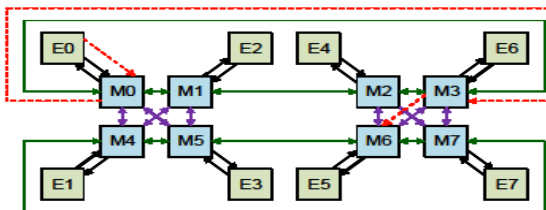


Systems for Machine Learning

- Real time ML frameworks
- ML architecture in edge computing
- Efficient ML accelerator and task scheduling

Accelerated Genomics Computing

- GPU architectures
- Hardware-software co-design



Conflict-free NoC for Heterogeneous System

Dynamic Reconfiguration of GPUs