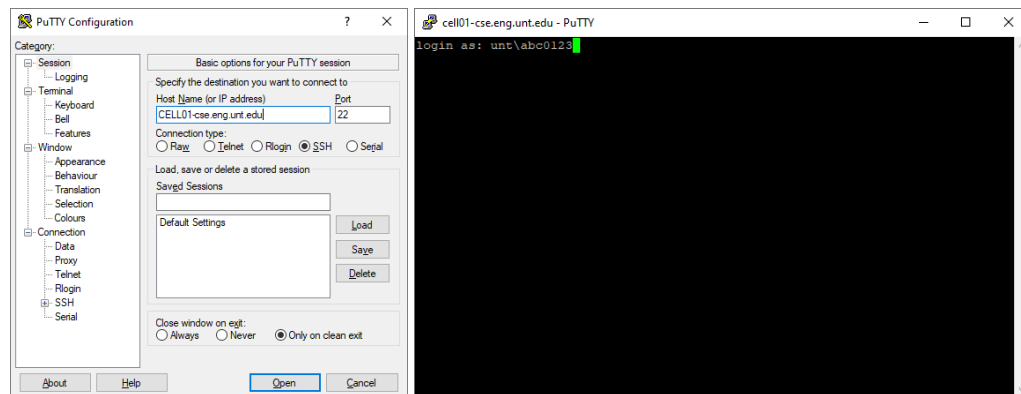


## Connecting to new CELL Machines

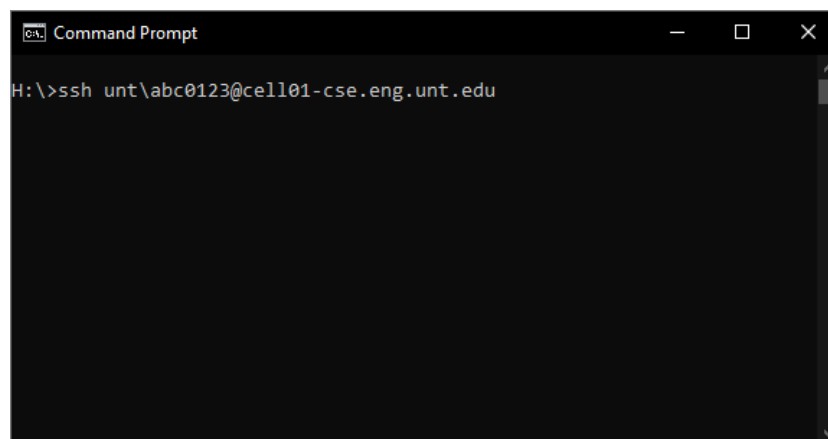
First, please note, the campus VPN Client MUST be used to connect if you are off campus.

The previous information that I had included with which you will login only considered my personal terminal application (MobaXTerm). I used it as an example, but mentioned that other applications will have slightly differently in the way that you authenticate. Syntax will vary from application to application. A few of the ones that have been mentioned by faculty are listed below.

- If using a more modern terminal program like MobaXTerm on Windows, connection will be as I had previously detailed.
  - Students: 'ssh eid@cell01-cse.eng.unt.edu'
  - Faculty: 'ssh unt\euid@cell01-cse.eng.unt.edu'
- If you are still using putty to connect, this will be different. You will specify the host name as 'cell01-cse.eng.unt.edu', and then once connected you will enter 'unt\euid' (replacing eid with your eid)

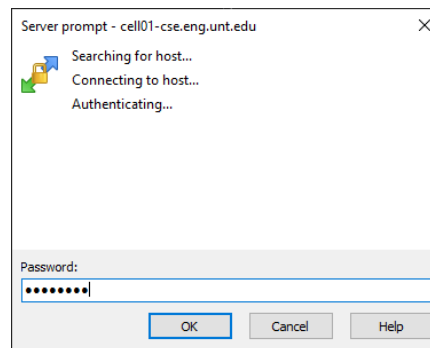
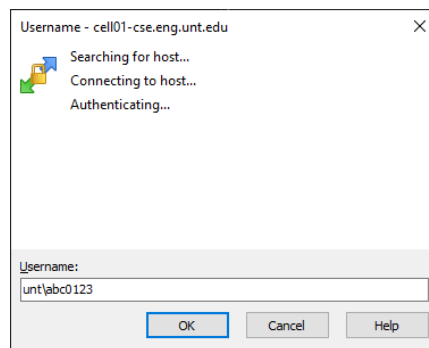
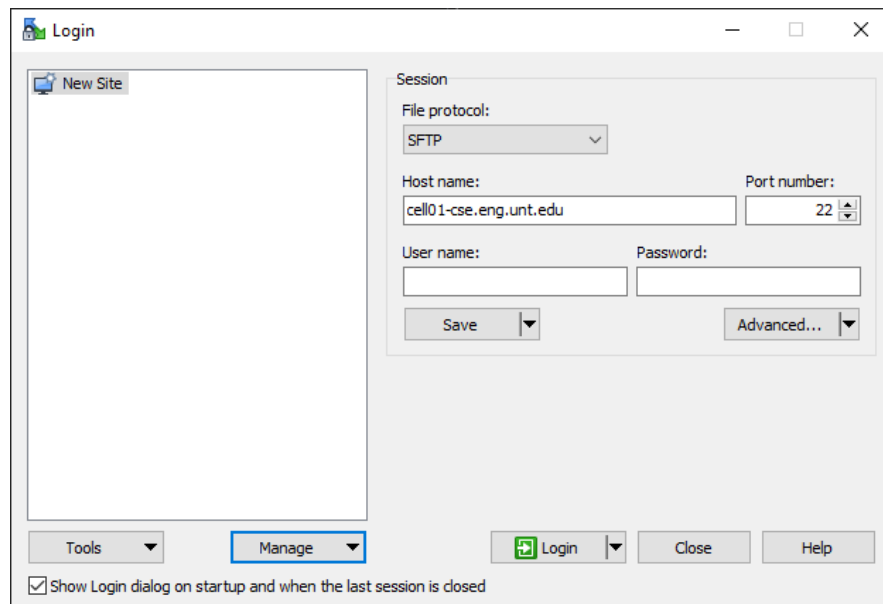


- If you are using Windows Command Prompt, you should just need to enter a single slash as well.



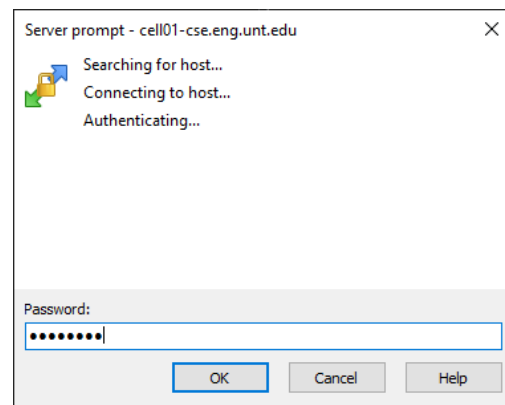
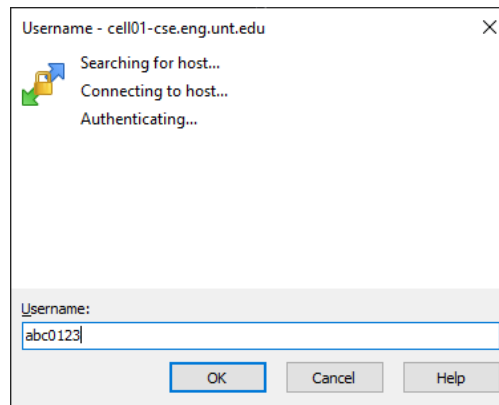
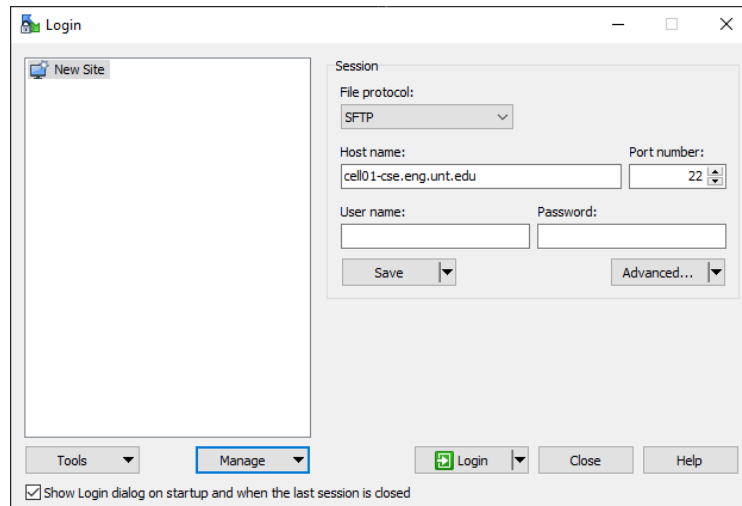
## Connecting to new CELL Machines

- WinSCP for FACULTY will need to enter their user name as 'unt\eid' (single slash)



## Connecting to new CELL Machines

- WinSCP for students will just require their eid and password:



- For students, whether WinSCP, Putty, MobaXTerm, terminal, Windows CMD, etc. They should only need to specify their eid and password. (STUDENTS\eid is not needed)

